



Rockmills Steel Products ©

(516) 829-8555

Info@rockmillsboilers.com

Over 50 years of excellence
(718) 366-8300

Specifications



Series MP
Horse Power:
Efficiency

MP-300
300 H.P.
Up to 85%

Gross Output

Steam	41850.0	SQ.FT
Steam	10042.5	MBH
Steam (per hr from & at 212 Deg F)	10350	LBS

Net Rating

SQ.Ft of Steam	33480.0	SQ.FT
MBH of Steam	8034	MBH

Firing Rate

Light Oil (140000 BTU/Gal)	87.5	GPH
Heavy Oil (150000 BTU GAL)	81.6	GPH
GAS	12247.0	MBH

General Information

Heating Surface	1500	SQ.FT
Furnace Volume	184.66	CU. FT
Safety Valve Relieving Capacity - Required Steam (Min)	12000	LB/HR
Steam Outlet Pipe Size	8	IN
Dry Boiler Weight (Approximate)	27,800	LB
Operating Weight (Approximate)	44,010	LB



Rockmills Steel Products ©

(516) 829-8555

Info@rockmillsboilers.com

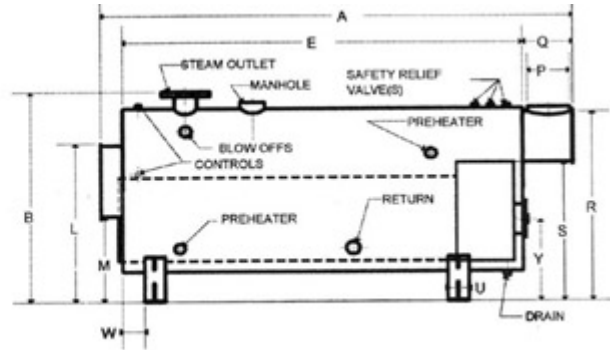
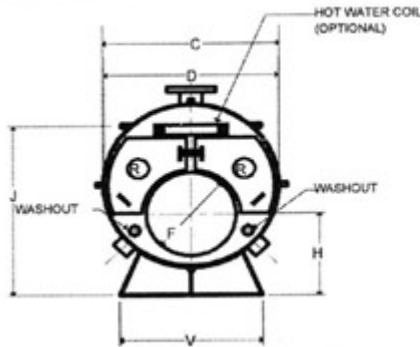
Over 50 years of excellence
(718) 366-8300

Dimensions



Series MP
Horse Power:
Efficiency

MP-300
300 H.P.
Up to 85%



** As per ASME code all boilers with a diameter greater than 60" will be equipped with 12"x16" manhole

Dimensions

A	Overall Length	16-5	FT-IN.
B	Overall Height (To Steam Outlet)	110	IN.
C	Shell Diameter (Over jacket 2" thick)	94.125	IN.
D	Shell Diameter	90.125	IN.
E	Shell Length	13-1	FT-IN.
F	Furnace Diameter	48	IN.
G	Furnace Length	126	IN.
H	Height-Centerline of Furnace	38.5	IN.
J	Normal Water Line	87.25	IN.
K	Depth-Front Reversing Chamber	10	IN.
L	Height-Front Rev. Chamber Top	84.375	IN.
M	Height-Front Rev. Chamber Bottom	38.25	IN.
N	Depth-Rear Combustion Chamber	24	IN.
P	Vent Outlet Diameter	26	IN.
Q	Depth-Smoke Box	29	IN.
R	Height-Smoke hood Top	100.25	IN.
S	Height-Smoke hood Bottom	69.75	IN.
T	Tube Pull	13-1	FT-IN.
U	Saddle Width	8	IN.
V	Saddle Length	78	IN.
W	Position-Front Saddle	14	IN.
X	Position-Rear Saddle	26	IN.
Y	Centerline of Access Door	34.1875	IN.
Z	Manhole	12 x 16	IN.
	Handhole	3 x 4	IN.