



Rockmills Steel Products [©]

Excellence Since 1954

(516) 829-8555

Info@rockmillsboilers.com

(718) 366-8300

Specifications



Series MP
Horse Power:
Efficiency

MP-125
125 H.P.
Up to 85%

Gross Output

Steam	17437.5	SQ.FT
Steam	4184.4	MBH
Steam (per hr from & at 212 Deg F)	4312.5	LBS

Net Rating

SQ.Ft of Steam	13950.0	SQ.FT
MBH of Steam	3347.5	MBH

Firing Rate

Light Oil (140000 BTU/Gal)	36.4	GPH
Heavy Oil (150000 BTU GAL)	34.0	GPH
GAS	5102.9	MBH

General Information

Heating Surface	625	SQ.FT
Furnace Volume	85.65	CU. FT
Safety Valve Relieving Capacity - Required Steam (Min)	5000	LB/HR
Steam Outlet Pipe Size	8	IN
Dry Boiler Weight (Approximate)	13,460	LB
Operating Weight (Approximate)	21,115	LB



Rockmills Steel Products ©

Excellence Since 1954

(516) 829-8555

Info@rockmillsboilers.com

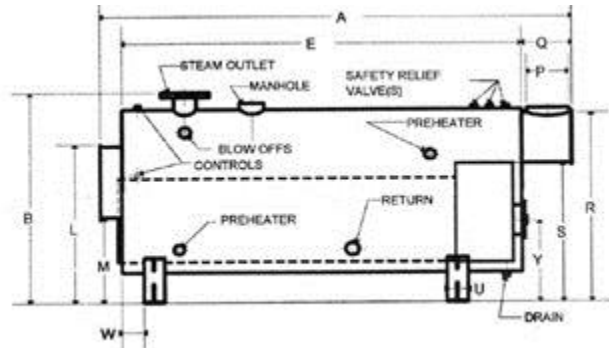
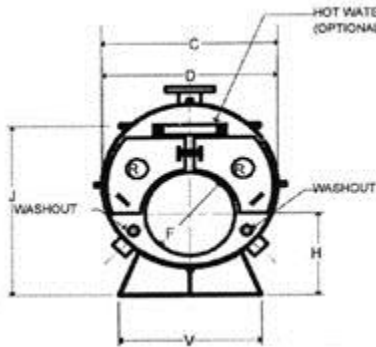
(718) 366-8300

Dimensions



Series MP
Horse Power:
Efficiency

MP-125
125 H.P.
Up to 85%



** As per ASME code all boilers with a diameter greater than 60" will be equipped with 12"x16" manhole

Dimensions

A	Overall Length	11-8	FT-IN.
B	Overall Height (To Steam Outlet)	91.5	IN.
C	Shell Diameter (Over jacket 2" thick)	76.125	IN.
D	Shell Diameter	72.125	IN.
E	Shell Length	9-1	FT-IN.
F	Furnace Diameter	40	IN.
G	Furnace Length	84	IN.
H	Height-Centerline of Furnace	36	IN.
J	Normal Water Line	73.5	IN.
K	Depth-Front Reversing Chamber	10	IN.
L	Height-Front Rev. Chamber Top	70.125	IN.
M	Height-Front Rev. Chamber Bottom	32.25	IN.
N	Depth-Rear Combustion Chamber	18	IN.
P	Vent Outlet Diameter	20	IN.
Q	Depth-Smoke Box	23	IN.
R	Height-Smoke hood Top	82.25	IN.
S	Height-Smoke hood Bottom	58.125	IN.
T	Tube Pull	9-1	FT-IN.
U	Saddle Width	8	IN.
V	Saddle Length	60	IN.
W	Position-Front Saddle	14	IN.
X	Position-Rear Saddle	21	IN.
Y	Centerline of Access Door	29.5	IN.
Z	Manhole	12 x 16	IN.
	Handhole	3 x 4	IN.