



# Rockmills Steel Products ©

(516) 829-8555

Info@rockmillsboilers.com

Over 50 years of excellence  
(718) 366-8300

## Specifications



**Series MP**  
**Horse Power:**  
**Efficiency**

**MP-350**  
**350 H.P.**  
**Up to 85%**

---

### Gross Output

<b>Steam</b>	48825.0	<b>SQ.FT</b>
<b>Steam</b>	11716.3	<b>MBH</b>
<b>Steam</b> (per hr from & at 212 Deg F)	12075	<b>LBS</b>

---

### Net Rating

<b>SQ.Ft of Steam</b>	39060.0	<b>SQ.FT</b>
<b>MBH of Steam</b>	9373	<b>MBH</b>

---

### Firing Rate

<b>Light Oil</b> (140000 BTU/Gal)	102.1	<b>GPH</b>
<b>Heavy Oil</b> (150000 BTU GAL)	95.3	<b>GPH</b>
<b>GAS</b>	14288.1	<b>MBH</b>

---

### General Information

<b>Heating Surface</b>	1750	<b>SQ.FT</b>
<b>Furnace Volume</b>	209.78	<b>CU. FT</b>
<b>Safety Valve Relieving Capacity -</b> Required Steam (Min)	14000	<b>LB/HR</b>
<b>Steam Outlet Pipe Size</b>	8	<b>IN</b>
<b>Dry Boiler Weight (Approximate)</b>	29,600	<b>LB</b>
<b>Operating Weight (Approximate)</b>	48,401	<b>LB</b>



# Rockmills Steel Products ©

(516) 829-8555

Info@rockmillsboilers.com

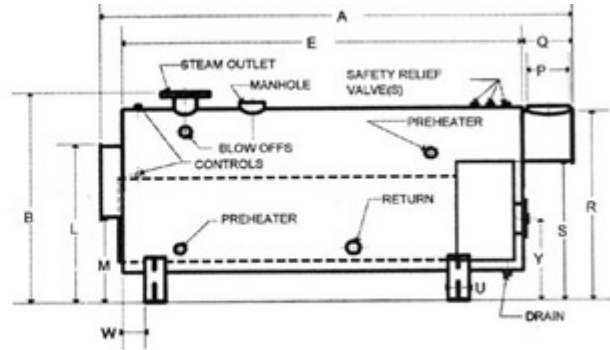
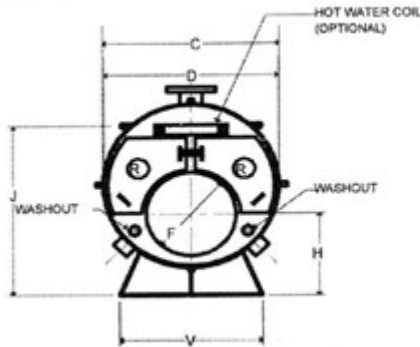
Over 50 years of excellence  
(718) 366-8300

## Dimensions



**Series MP**  
**Horse Power:**  
**Efficiency**

**MP-350**  
**350 H.P.**  
**Up to 85%**



\*\* As per ASME code all boilers with a diameter greater than 60" will be equipped with 12"x16" manhole

## Dimensions

<b>A</b>	Overall Length	18-4	FT-IN.
<b>B</b>	Overall Height (To Steam Outlet)	110	IN.
<b>C</b>	Shell Diameter (Over jacket 2" thick)	94.125	IN.
<b>D</b>	Shell Diameter	90.125	IN.
<b>E</b>	Shell Length	15-0	FT-IN.
<b>F</b>	Furnace Diameter	48	IN.
<b>G</b>	Furnace Length	150	IN.
<b>H</b>	Height-Centerline of Furnace	38.5	IN.
<b>J</b>	Normal Water Line	87.25	IN.
<b>K</b>	Depth-Front Reversing Chamber	10	IN.
<b>L</b>	Height-Front Rev. Chamber Top	84.375	IN.
<b>M</b>	Height-Front Rev. Chamber Bottom	38.25	IN.
<b>N</b>	Depth-Rear Combustion Chamber	24	IN.
<b>P</b>	Vent Outlet Diameter	26	IN.
<b>Q</b>	Depth-Smoke Box	29	IN.
<b>R</b>	Height-Smoke hood Top	100.25	IN.
<b>S</b>	Height-Smoke hood Bottom	69.75	IN.
<b>T</b>	Tube Pull	15-0	FT-IN.
<b>U</b>	Saddle Width	8	IN.
<b>V</b>	Saddle Length	78	IN.
<b>W</b>	Position-Front Saddle	14	IN.
<b>X</b>	Position-Rear Saddle	26	IN.
<b>Y</b>	Centerline of Access Door	34.1875	IN.
<b>Z</b>	Manhole	12 x 16	IN.
	Handhole	3 x 4	IN.