



Rockmills Steel Products [©]

Excellence Since 1954

(516) 829-8555

Info@rockmillsboilers.com

(718) 366-8300

Specifications



Series
Horse Power:
Efficiency

MP-150SS
150 H.P.
Up to 85%

Gross Output

Steam	20925.0	SQ.FT
Steam	5021.3	MBH
Steam (per hr from & at 212 Deg F)	5175	LBS

Net Rating

SQ.Ft of Steam	16740.0	SQ.FT
MBH of Steam	4017.0	MBH

Firing Rate

Light Oil (140000 BTU/Gal)	43.7	GPH
Heavy Oil (150000 BTU GAL)	40.8	GPH
GAS	6123.5	MBH

General Information

Heating Surface	750	SQ.FT
Furnace Volume	104.304	CU. FT
Safety Valve Relieving Capacity - Required Steam (Min)	6000	LB/HR
Steam Outlet Pipe Size	8	IN
Dry Boiler Weight (Approximate)	15,044	LB
Operating Weight (Approximate)	24,188	LB



Rockmills Steel Products ©

Excellence Since 1954

(516) 829-8555

Info@rockmillsboilers.com

(718) 366-8300

Dimensions

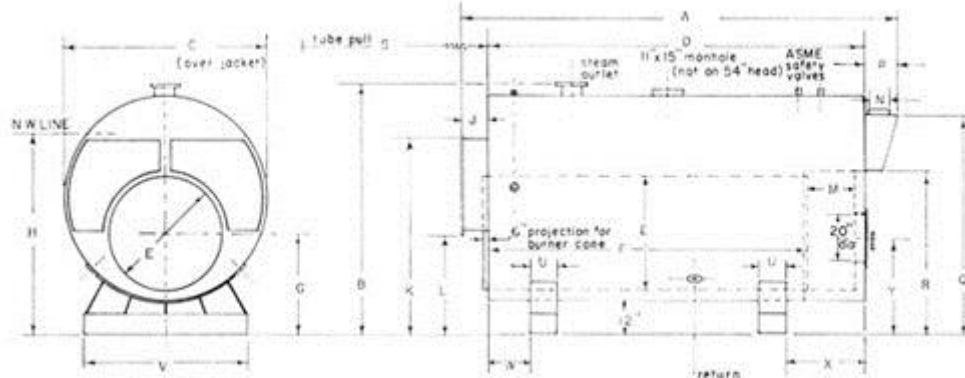


Series MP-4

Horse Power:
Efficiency

MP-150SS

150 H.P.
Up to 85%



** As per ASME code all boilers with a diameter greater than 60" will be equipped with 12"x16" manhole

Dimensions

Letter	Description	Value	Unit
A	Overall Length	12-4 5/8	FT-IN.
B	Overall Height	97.5	IN.
C	Shell Diameter (Over jacket 2" thick)	82.25	IN.
D	Shell Length	9-5 1/4	FT-IN.
E	Furnace Diameter	40	IN.
F	Furnace Length	76.25	IN.
G	Height-Centerline of Furnace	36.125	IN.
H	Normal Water Line	79.75	IN.
J	Depth-Front Reversing Chamber	10.75	IN.
K	Height-Front Rev. Chamber Top	75.875	IN.
L	Height-Front Rev. Chamber Bottom	35.125	IN.
M	Depth-Rear Combustion Chamber	30	IN.
N	Vent Outlet Diameter	20	IN.
P	Depth-Smoke Box	23.75	IN.
Q	Height-Smoke hood Top	89	IN.
R	Height-Smoke hood Bottom	64.125	IN.
S	Tube Pull	9-5 1/4	FT-IN.
U	Saddle Width	8	IN.
V	Saddle Length	66	IN.
W	Position-Front Saddle	14	IN.
X	Position-Rear Saddle	32	IN.
Y	Centerline of Access Door	29.75	IN.
Z	Manhole	12 x 16	IN.
	Handhole	3 x 4	IN.